



A Collaborative Orthopedic Outcomes Database

The OrthoTRACK™ Registry is a prospective, multicenter, observational quality improvement tool. The platform enables participants to collect comprehensive treatment and outcomes data on patients undergoing joint arthroplasty procedures,* regardless of treatment or products used.

*Scope expansion to include limb lengthening and trauma is underway.



Patients

Engage in tracking their progress to better understand the results of their treatment over time



Participants

Use real-time reports to assess treatment outcomes



Hospitals

Evaluate variation in outcomes to gain insight into the overall quality of care

Simplified Data Collection

- **Simple and intuitive** data entry
- **Securely hosted** and HIPAA-compliant browser-based platform
- **Smartphone and tablet friendly** with point-of-care app
- **Role-based logins** to allow stratified levels of access to data

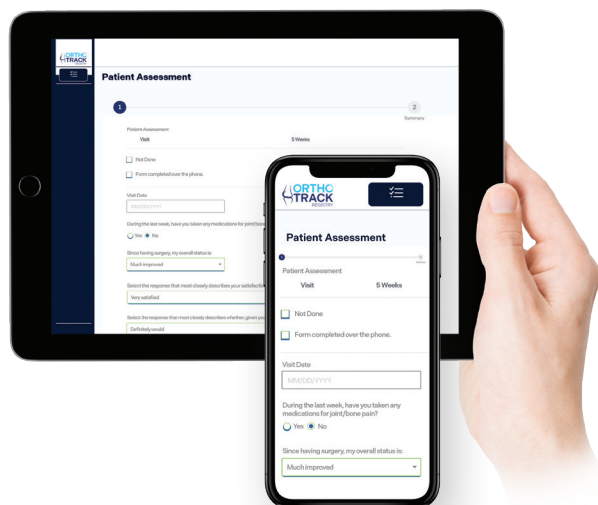
Data Collected by the Patient

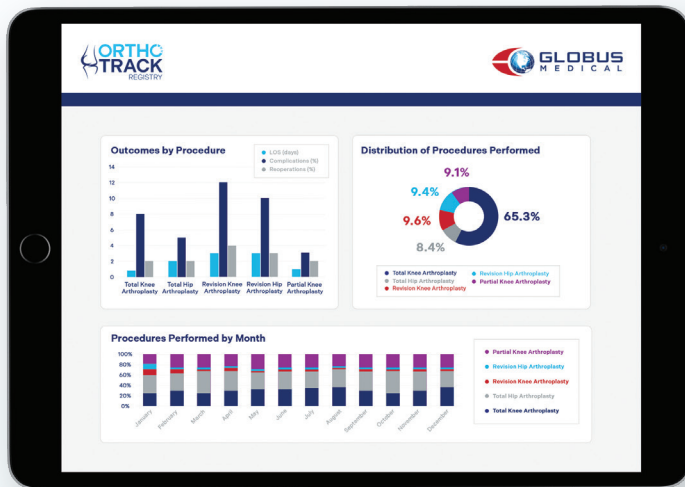
Socioeconomic information:

Education, work status/return to work, insurance coverage, pain medication usage

Patient-reported outcomes:

Knee Society Score (KSS), Hip dysfunction and Osteoarthritis Outcome Score for Joint Replacement (HOOS JR), Knee injury Osteoarthritis Outcome Score for Joint Replacement (KOOS JR), PROMIS Global-10, EQ-5D-3L™, Harris Hip Score (HHS)





Customized Reporting and Real-Time Output

Customizable dashboard to track what matters most

Real-time **dynamic reporting** capabilities

On-demand, raw data extracts for more advanced analyses

Data Collected by the Participant

Demographics:

Height/weight, age, sex, comorbidities, diagnosis, previous treatments/surgery, weight-bearing status

Treatment details:

Surgery location (inpatient, outpatient, ASC), implant type, procedure descriptions, use of computer/robotic assisted navigation, operative time, blood loss, length of hospital stay, discharge disposition (rehab, skilled nursing)

Complications, rate of reoperation:

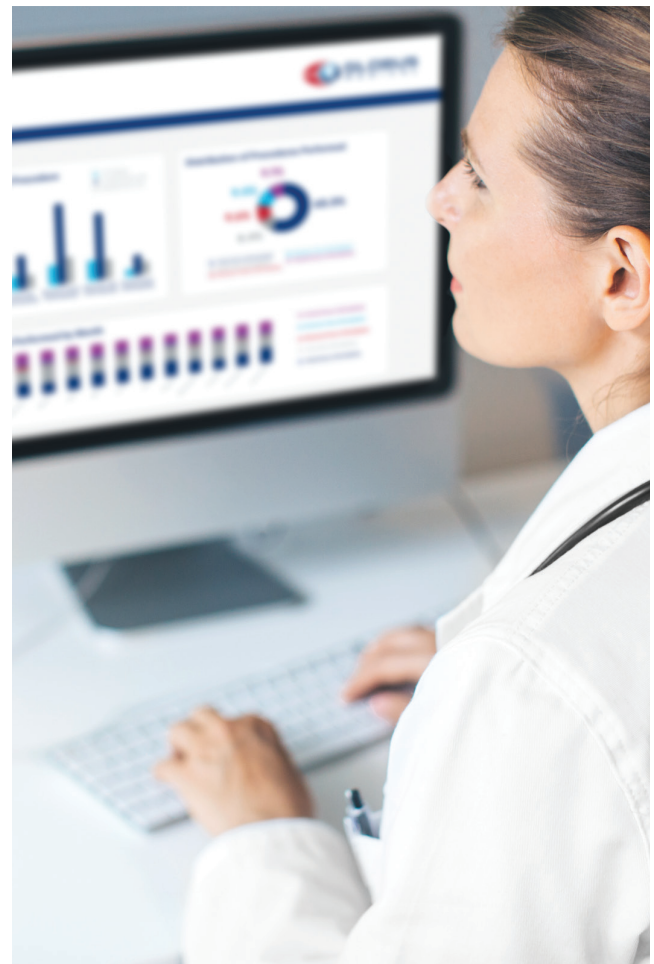
Timing and details of complication, including revision, hospitalization requirements, treatment, outcome

Registry data can be used to:

- **Benchmark** patient outcomes
- **Quantify** complications and revisions across procedures
- Track patient satisfaction and other **patient-reported outcomes**
- Quantify **efficiency and outcome metrics**

Site Implementation and Support

The Registry team is available to assist participants with implementation and optimization of OrthoTRACK™.





Globus Medical
Valley Forge Business Center
2560 General Armistead Avenue
Audubon, PA 19403
globusmedical.com

Customer Service:

Phone 1-866-GLOBUS1 (or 1-866-456-2871)
Fax 1-866-GLOBUS3 (or 1-866-456-2873)