

CLINICAL STUDY SUMMARY

A Radiographic Analysis of the Use of Banana-Shaped Articulating Interbody Spacers in Lumbar Spine Fusion: Retrospective Design

Anthony Russo, MD, Katelyn Stetzner, and Torrey Shirk
Interdiscip Neurosurg 23 (2021) 100918, 2020.

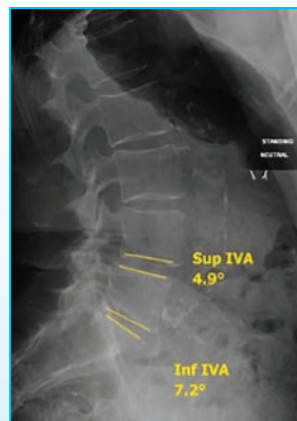
OBJECTIVE: This study examined patients treated with the ALTERA® Articulating Expandable TLIF Spacer designed to address the limitations of the MIS TLIF procedure.

METHOD: A retrospective chart review of clinical and radiographic data was performed on a cohort of 46 patients at a single site. Radiographs were measured to determine preoperative and postoperative disc height, neuroforaminal height, intervertebral angle (IVA), and lumbar lordosis.

ALTERA®
Articulating Expandable
TLIF Spacer



Lateral Lumbar Radiographs



Preoperative

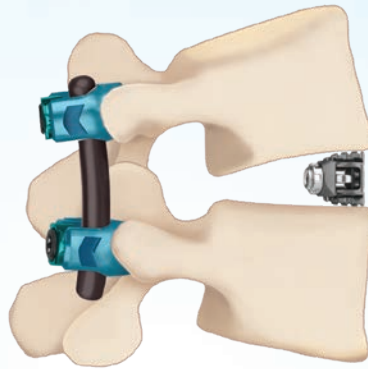


6-month follow-up

Radiographic outcomes demonstrated the following improvements at 6-month follow-up:

35.95%
INCREASE

Average Posterior Disc Height

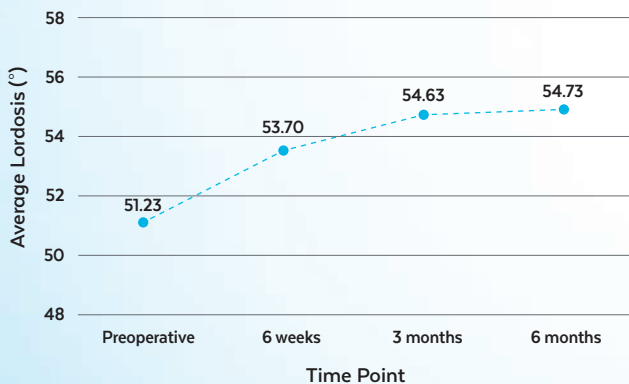


42.51%
INCREASE

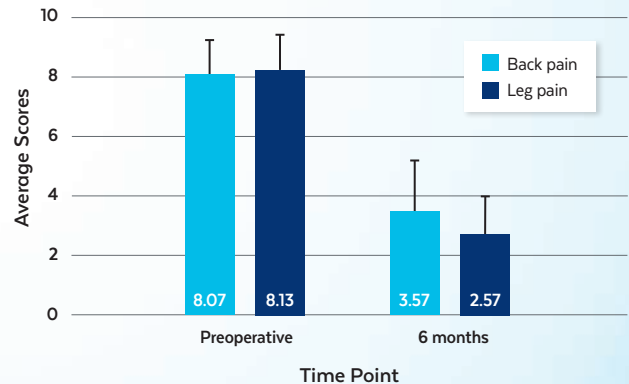
Average Anterior Disc Height

- Anterior disc height increased significantly ($P < 0.001$) from 9.95 ± 3.39 mm preoperatively to 14.18 ± 2.46 mm at 6-month follow-up.
- Posterior disc height increased significantly ($P < 0.001$) from 5.73 ± 2.19 mm preoperatively to 7.79 ± 2.89 mm at 6-month follow-up.
- Lumbar lordosis increased significantly ($P < 0.001$) from $51.23 \pm 16.12^\circ$ preoperatively to $54.73 \pm 14.27^\circ$ at 6-month follow-up.
- Visual Analog Score (VAS) back pain scores decreased significantly ($P < 0.001$) from 8.07 ± 1.11 preoperatively to 3.57 ± 1.55 at 6-month follow-up.
- VAS leg pain scores decreased significantly ($P < 0.001$) from 8.13 ± 1.22 preoperatively to 2.57 ± 1.43 at 6-month follow-up.
- There were no intraoperative or postoperative complications.

LUMBAR LORDOSIS



VAS PAIN SCORES



CONCLUSION: This study supported the use of the ALTERA[®] Articulating Expandable TLIF Spacer through an MIS TLIF approach for lordosis correction. When placed anteriorly, the ALTERA[®] Articulating Expandable TLIF Spacer allowed for increased lordosis within the segment and improved sagittal balance parameters, intervertebral disc height, and pain scores.



Scan the QR code to download the article or visit globusmedical.com/Altera-Russo-Study

Talk to your Globus Medical sales representative to learn more about our complete line of expandable devices.

GMSS83
01.21 Rev A



GLOBUS
MEDICAL